

**DATA SHEET FOR FLP AVIATION LED LIGHT FITTING**

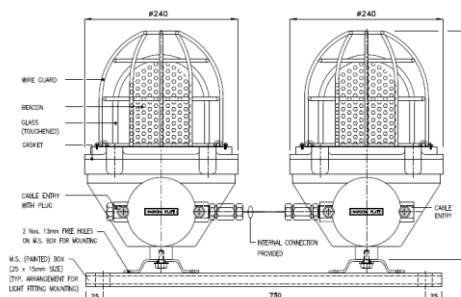
FLP- WP LED AVIATION LAMP IIA , IIB , IIC

TECHNICAL DATA:

PRODUCT	:	CAT NO : WG / 1238
ENCLOSURE	:	FLAME PROOF (Ex -d) , Gas Group IIA , IIB , IIC As per IS/IEC 60079-1 : 2014
PROTECTION	:	WEATHER PROOF IP – 66 AS PER IS/IEC 60529:2001 (Reaffirmed 2014)
AREA CLASSIFICATION	:	Ex db IIC T6 Gb (EX tb / tc IIIC T85 C Db/Dc (ZONE 1 & 2 & Zone 21 & 22)
TEMPERATURE CLASS	:	T 6
MATERIAL	:	DIE CAST ALUMINIUM ALLOY
FINISH	:	EPOXY POWDER COATED SHADE AS PER IS : 5
EARTHING	:	1 No INTERNAL & 2 No's EXTERNAL
HARDWARE	:	STAINLESS STEEL
GASKET	:	'O' RING ENDLESS GASKET NEOPRENE / SILICON
NAME PLATE	:	SS NAME PLATE CUM WARNING PLATE
GLASS	:	HEAT RESISTANT CLEAR TYPE – A TOUGHENED GLASS (DOME)
HOLDER	:	ES HOLDER
ENTRIES	:	2 Nos M20 / ½ " NPT / EQUIVALENT
VOLTAGE	:	24V DC
INPUT FREQUENCY	:	50 Hz.
SURFACE TEMPERATURE	:	MAX . 70°
LED MAKE	:	CLUSTER TYPE ' SUDHIR ' OR EQUIVELANT

**OPTIONS**

SR.NO	PARTICULAR	OPTIONS
1.	MATERIAL OF CONSTRUCTION	STAINLESS STEEL
2.	VOLTAGE	230 V AC , 110 V DC/110 V AC
3.	COLOUR SHADE	631 , 632 , 355 , 7031 , 7032 etc..
4.	WIRE GUARD	MS WHITE EPOXY POWDER COATED / SS
5.	TYPE	SINGLE / DOUBLE
6.	COLOUR	RED , BLUE , GREEN , ORANGE ETC.

**SELECTION CHART**

SR.NO	PARTICULAR	OPTIONS	TYPE	WATTAGE
1.	SINGLE	LOW INTENSITY	A) FLASHING B) ROTATING C) STEADY	6
2.		MEDIUM INTENSITY	A) FLASHING B) ROTATING C) STEADY	15
3.	DOUBLE	LOW INTENSITY	D) FLASHING E) ROTATING F) STEADY	6
4.		MEDIUM INTENSITY	D) FLASHING E) ROTATING F) STEADY	15