

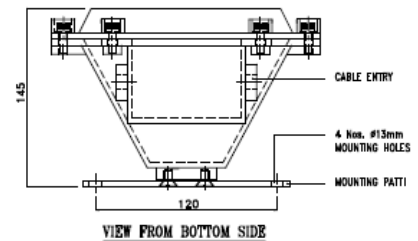
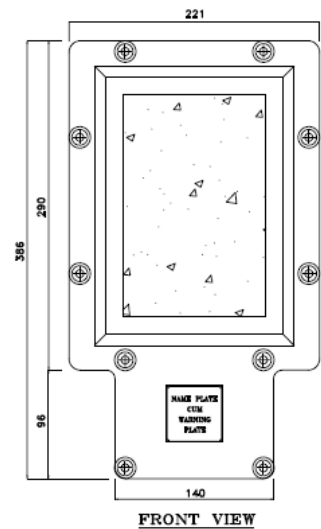
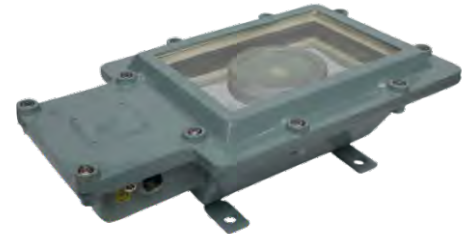


DATA SHEET FOR FLP BULKHEAD LIGHT FITTING

BULKHEAD IIA & IIB UP TO 45 W LED

TECHNICAL DATA:

- PRODUCT : CAT. NO.- BH/124
- ENCLOSURE : FLAME PROOF (Ex -d), Gas Group IIA, IIB
As per IS/IEC 60079-1: 2014
- AREA & TEMP. CLASS : Ex db IIA & IIB C T6 Gb (EX TB / TC IIIC T85 C Db/Dc
(ZONE 1 & 2, ZONE 21 & 22)
- CERTIFICATION : CIMFR, BIS, PESO
- TEMPERATURE CLASS : T6
- MATERIAL : DIE CAST ALUMINIUM ALLOY
- FINISH : EPOXY POWDER COATED SHADE AS PER IS: 5
- EARTHING : 1 No INTERNAL & 2 No's EXTERNAL
- HARDWARE : STAINLESS STEEL
- GASKET : 'O' RING ENDLESS GASKET NEOPRENE / SILICON
- NAME PLATE : SS NAME PLATE CUM WARNING PLATE
- GLASS : HEAT RESISTANT CLEAR TYPE-A TOUGHENED
GLASS (FLAT)
- ENTRIES : 2 Nos M20 / 1/2 "NPT / EQUIVALENT
- VOLTAGE : 140 V – 270 V (240 V AC)
- POWER FACTOR : ≥ 0.95
- INPUT FREQUENCY : 50 Hz.
- EFFICACY : ≥ 100 LUMEN PER WATT
- COLOUR (CCT) : 3000K / 5700K / 6500 K / OR AS SPECIFIED
- CRI : ≥ 80 RA
- THD : ≤ 10 % THD
- SURFACE TEMP. : MAX. 70°
- SURGE PROTECTION : 10 KV SPD
- LED MAKE : CITIZEN / OSRAM / BRIDGELUX / EQUIVALENT
- DRIVER MAKE : OSRAM / PHILIPS / FULHAM / EQUIVALENT
- BIS APPROVED



OPTIONS

SR.NO	PARTICULAR	OPTIONS
1.	MATERIAL OF CONSTRUCTION	STAINLESS STEEL
2.	VOLTAGE	220V DC / 110 V AC / 110 V DC / 24 V AC
3.	LED TYPE	COB / SMD
5.	GLAND & PLUG	BRASS / SS / ALUMINIUM
6.	COLOUR SHADE	631 , 632 , 355 , 7031 , 7032 etc..

SELECTION CHART

SR.NO	WATTAGE	PART NO
1	20	BH/ 124 / 20
2	30	BH / 124 / 30
3	45	BH / 124 / 45

